

transport for quality of life

Stakeholder Workshop

West of England
Local Sustainable Transport Fund Bid

Bristol, 5th April 2011



transport for quality of life

Local Sustainable Transport Fund: essentials of a good bid

Beth Hiblin

07834 831172

beth@transportforqualityoflife.com

www.transportforqualityoflife.com



Local Sustainable Transport Fund

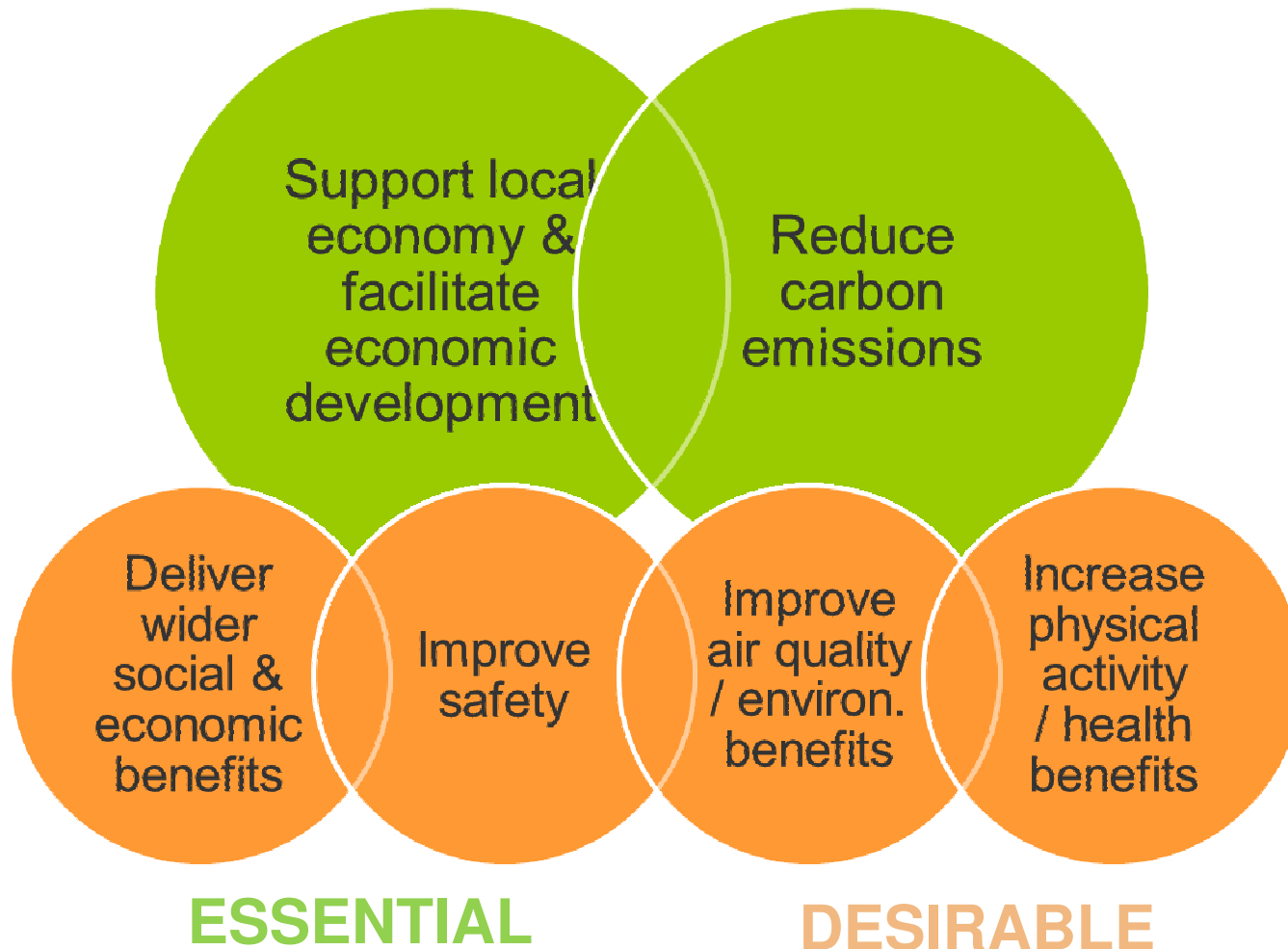
- For English transport authorities (excl. London)
- £560m over 4 years
 - 2/3 of authorities could benefit
 - Small Projects – up to £5m
 - Large Projects – up to £50m (optional £5m Key Component)
- Revenue & capital (63%:37% split)
- Boost sustainable travel & improve travel choices
- Locally designed solutions
- Targeted packages of complementary measures

West of England LSTF Bid

- Joint West of England bid in development
 - Bath & North East Somerset Council
 - Bristol City Council
 - North Somerset Council
 - South Gloucestershire Council
- Planning a **Large Project** bid
- Incorporating a **Key Component** bid (c. £5m)



Bid Essentials: Objectives



transport for quality of life

Bid Essentials: Design

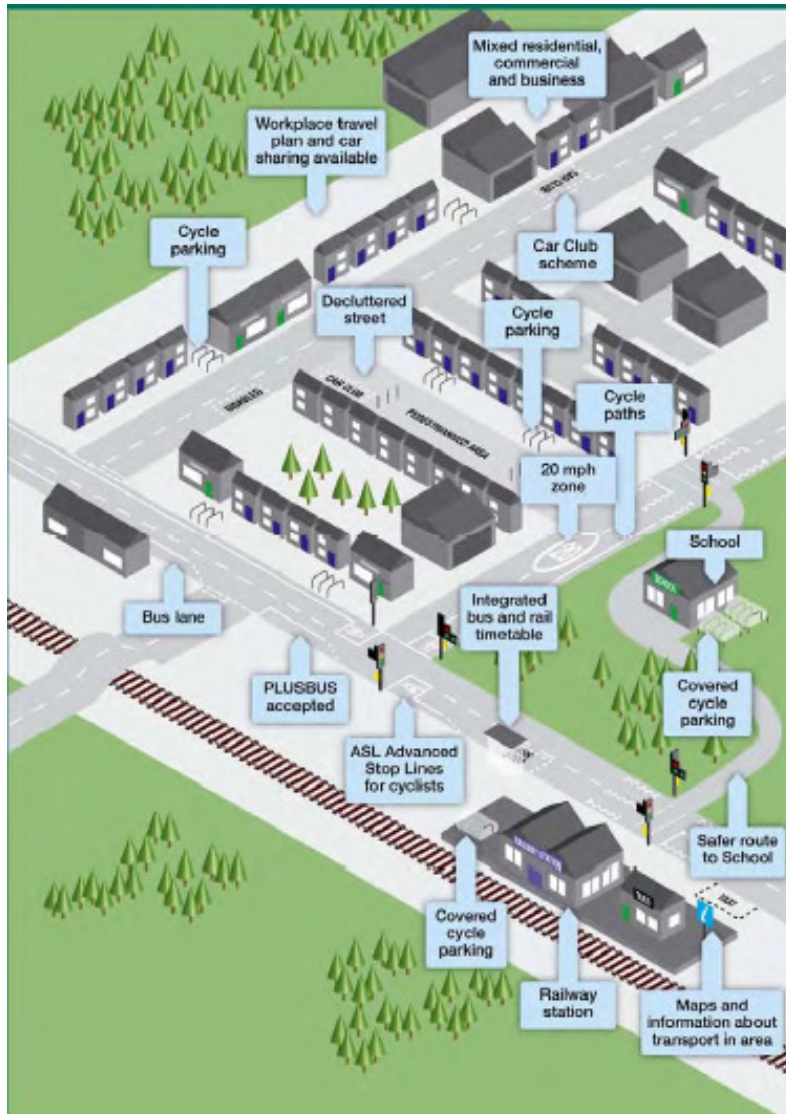


Bid Essentials: Package

Address **People, Place, Purpose**

- Who can change their travel?
- What will motivate them?
- Where do they live?
- Where are they going?
- How do we engage them?
- What will overcome their barriers to change?

Bid Essentials: Package



Source: Creating Growth, Cutting Carbon (DfT, 2011)

Must be a package of complementary measures

- Encourage mode shift
- Manage demands on the network
- Improve traffic management
- Improve access & mobility

transport for quality of life

So, a strong WoE bid will...

- Improve local economy / reduce carbon
- Have other social, economic, environmental, health & safety benefits
- Deliver this through a package of complementary measures which address people, place, purpose
- Be value for money, financially sustainable & deliverable
- Have as large a local contribution to cost as possible
- Have as large a contribution from private sector and external organisations as possible
- Be supported by the community
- Be designed and delivered in partnership with others